



Fiona Maguire
Senior Environmental Health Officer

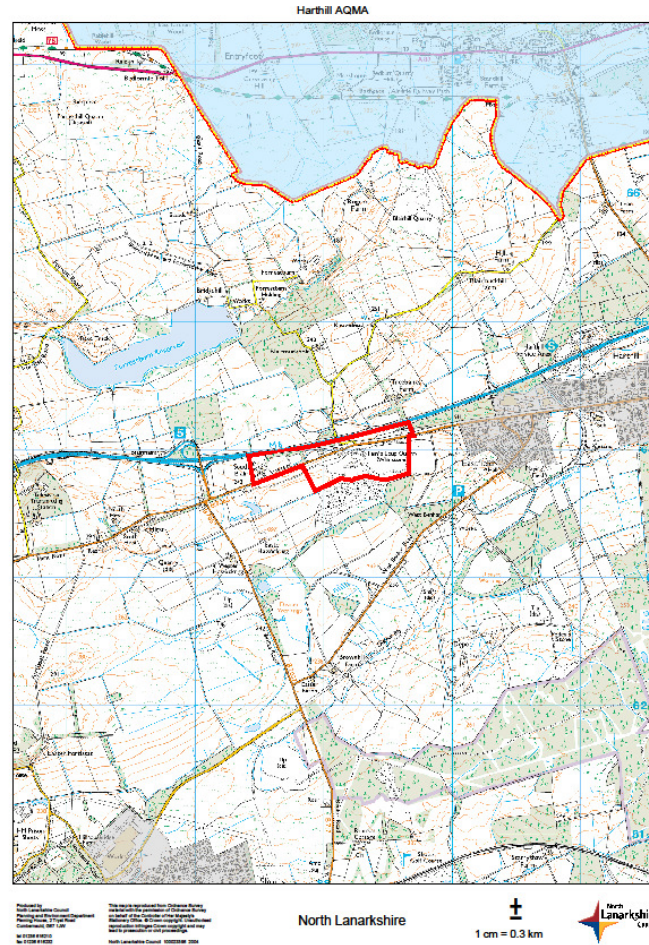
Revocation of AQMA at Harthill



service and people first



Harthill AQMA



service and people first



Harthill AQMA



Produced by
North Lanarkshire Council
Planning and Environmental
Control Services Dept. Unit
No. 01224 842210
No. 01224 842222

This aerial photograph has been taken from the
aerial photography of Ordnance Survey
in the year of the publication of this map. It is
not a true representation of the ground and may
not be used for navigation purposes.
North Lanarkshire Council 000000000 2004

North Lanarkshire

±
1 cm = 0.1 km



first



Sources of PM₁₀ at Harthill AQMA

- **Tam's Loup quarry, including**
 - **Point source emissions from on-site crusher plant**
 - **Wind-blown fugitive emissions from quarry**
- **Road traffic emissions from M8 motorway**
- **Road traffic emissions from traffic on the B7066, including HGV accessing quarry and former truck stop**
- **Prevailing background PM₁₀ concentrations**

Air quality monitoring at Harthill AQMA

- Automatic monitoring commenced 2002 at Hirst Road, Harthill with TEOM
- Co-location study carried out in 2005 adjacent to residential receptors in Hirst Road Harthill to obtain NLC-specific bias adjustment factor
- AQMA declared in July 2008 for likely exceedences of annual mean objective for PM₁₀
- Continued monitoring after AQMA declaration indicated decrease in measured PM₁₀ concentrations



Year	Annual Mean ($\mu\text{g}/\text{m}^3$)
2002	19
2003	21
2004	19
2005	-
2006	18
2007	19
2008	16.5
2009	14
2010	16.5

After Declaration of Harthill AQMA

- **AQMA declaration July 2008**
- **Further Assessment carried out**
- **Continued to monitor AQ, in new location at a residential property at western end of AQMA, further from quarry but closer to M8**
- **Discussions with SEPA and site visit to quarry**
- **Economic downturn – quarry output decreased**
- **Truck stop had ceased to operate**
- **Measured and background PM₁₀ concentrations were noted to be decreasing.....**

service and people first





Decision to attempt AQMA Revocation!

Revocation Process

- **Further Assessment carried out, providing our case for AQMA revocation**
- **Submitted to Scottish Government and SEPA for appraisal**
- **Once approved, Committee Report prepared outlining intention to revoke AQMA**
- **Consultation undertaken in respect of our intention to revoke AQMA– with statutory consultees, adverts in press etc.**
- **Further Committee Report once consultation period completed.**
- **AQMA Revocation Order prepared in conjunction with NLC Legal**
- **AQMA Revocation ratified by Full Council 22nd March 2012**
- **AQMA Revocation Order takes effect from 30th March 2012**

service and people first



The future for Harthill AQMA

- **AQMA area will be kept under review, particularly in light of any increased activity at the quarry**
- **Background PM₁₀ levels in area will continue to be observed**
- **Any further action required will be taken e.g. Further monitoring**

What have I learned?

- **Essentially, LAQM is a dynamic process**
- **AQMAs should not be regarded as being in place for ever and ever !**
- **Successful revocation can be achieved as a result of things both within and outwith your control..... a bit of luck helps too !**



Thanks for listening !

maguiref@northlan.gov.uk

01236 638622



service and **people** first

